



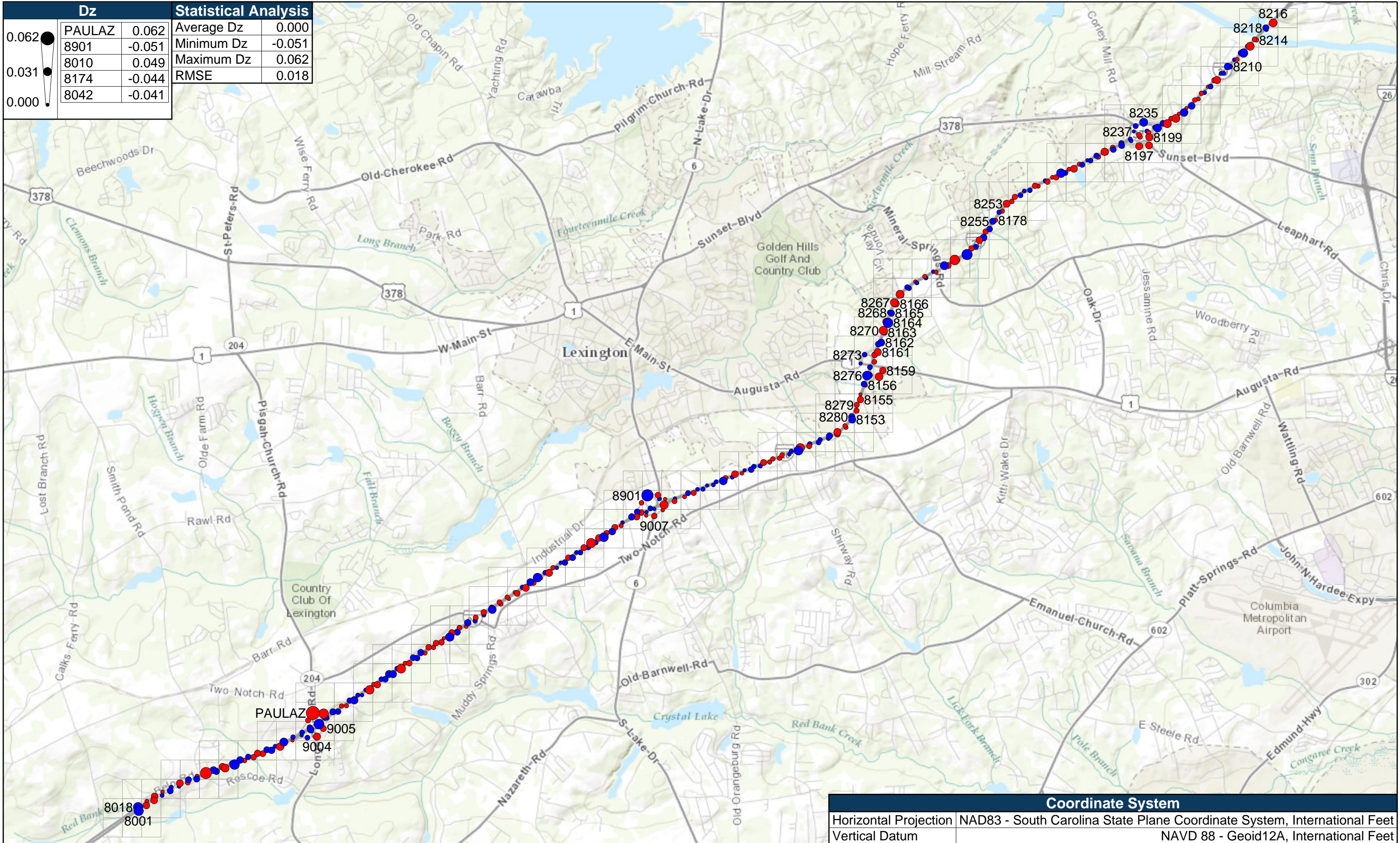
Surveyor's Certification

In 2013, GMR Aerial Surveys, Inc. d/b/a Photo Science, a Quantum Spatial Company provided aerial mapping services for approximately 14 miles of Interstate 20 and 8.5 miles of Interstate 77 in Richland and Lexington Counties. These aerial surveys were performed in accordance with our contract with South Carolina and were tested for accuracy. The following two pages are the results of these accuracy tests, and in my opinion, are a true and accurate representation of the overall accuracy of the data provided to South Carolina Department of Transportation for this project.

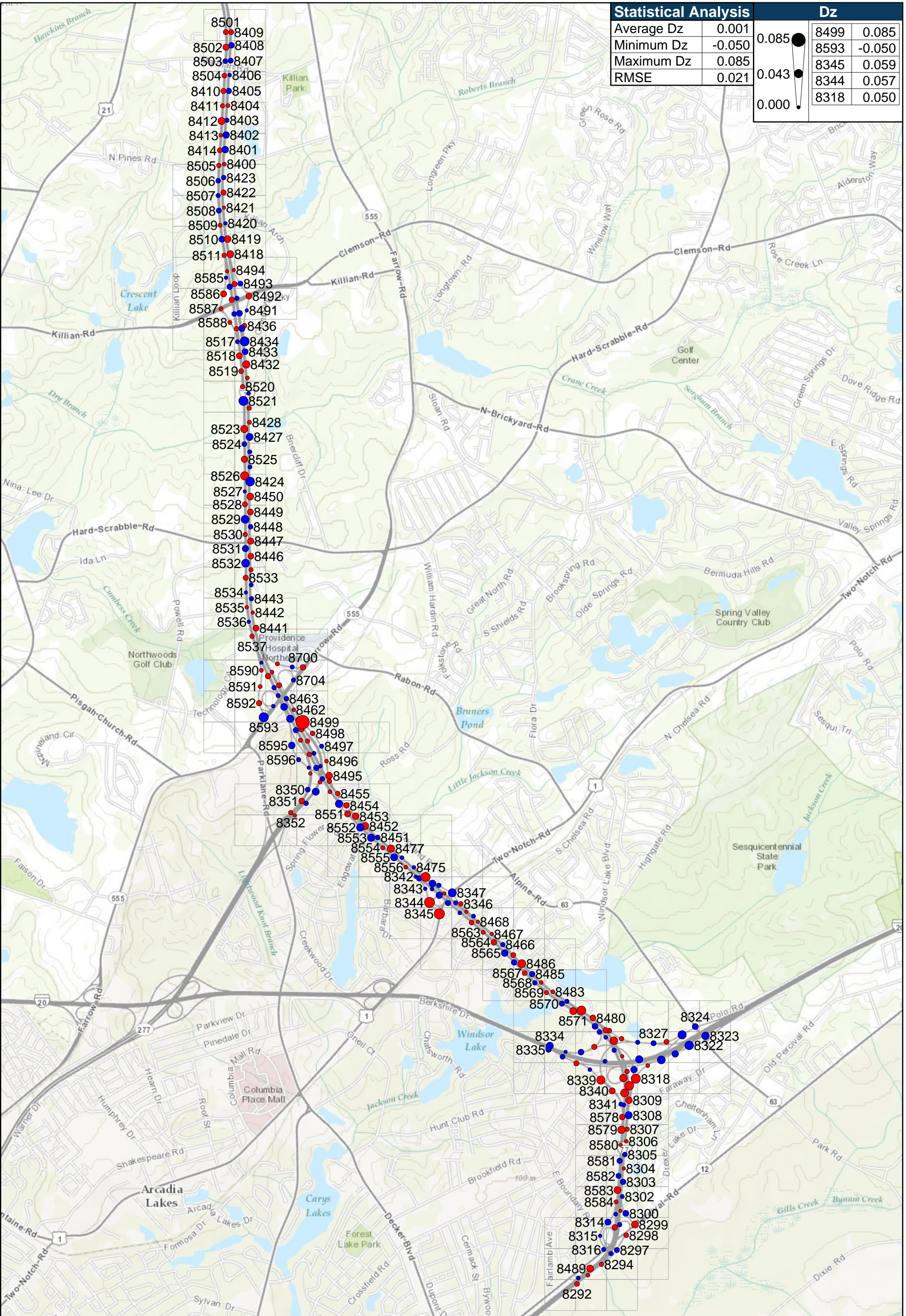


Jeffrey S. Simmons, PLS
Vice President
October 22nd, 2015

Dz		Statistical Analysis	
0.062	PAULAZ	0.062	Average Dz
0.031	8901	-0.051	Minimum Dz
0.000	8010	0.049	Maximum Dz
	8174	-0.044	RMSE
	8042	-0.041	



Coordinate System	
Horizontal Projection	NAD83 - South Carolina State Plane Coordinate System, International Feet
Vertical Datum	NAVD 88 - Geoid12A, International Feet



Coordinate System

Horizontal Projection NAD83 - South Carolina State Plane Coordinate System, International Feet
Vertical Datum NAVD 88 - Geoid12A, International Feet